

# Daily Derivatives & Market Report

dy/dx

## CONTENTS

Pg No.	Particulars
3	Market Summary
4	Nifty Futures – Derivatives Snap
5	Activity in Nifty Options
6	What do Nifty Technicals suggest
	Disclaimer

## Market Summary

Domestic Indices	Close	Points	% Chg
SENSEX	29398.1	-44.52	-0.15
NIFTY	9084.8	-2.20	-0.02
MIDCAP	13700.6	143.4	1.06
SMLCAP	13858.5	91.04	0.66
BSEFMC	8949.9	16.07	0.18
AUTO	22221.0	156.4	0.71
POWER	2194.5	3.36	0.15
REALTY	1523.2	10.86	0.72
BSE IT	10384.8	-191.9	-1.81
BANDEX	24150.7	68.2	0.28
OILGAS	13365.8	-4.28	-0.03
METAL	11570.6	50.33	0.44

Currency Futures	Close	Pre. Pts	% Chg
29-Mar-16 EUR-INR	70.00	70.23	-0.33
29-Mar-16 USD-INR	65.79	65.95	-0.25
29-Mar-16 GBP-INR	8032	80.11	0.25
29-Mar-16 JPY-INR	57.45	57.43	0.07

Advance/ Decline	Adv	Dec	Un Ch.
NSE	885	761	82
BSE	1404	1413	180

FII/DII Capital Mkt*	Buy	Sell	Net
FII	5958	4817	1141
DII	3197	3071	127

\*NOTE: - FII AND DII data figure is provisional

## Market Commentary

Indian equity benchmarks ended the lackluster day of trade with marginal losses, as traders opted to book some of their profits after yesterday's rally. Frontline gauges swung between green and red throughout the day, as traders remained cautious ahead of the US Federal Reserve's rate decision. The Fed is almost universally expected to raise its benchmark interest rates, but investors are keen on seeing how much more tightening will happen this year. Traders remained on sidelines as the likelihood of a repo rate cut in April 2017 remained subdued. Those hoping that the Reserve Bank of India (RBI) would slash interest rates going ahead may just have to wait further as the inflation may have come back to haunt the economy. Higher food, fuel, non-fuel commodities and power prices, and playing out of base effect in February had led to both Wholesale Price Index (WPI) and Consumer Price Index (CPI) or retail inflation soaring northwards to 6.55% and 3.65%, respectively. The WPI inflation was highest in 39 months, while the retail inflation was at a 4-month high.

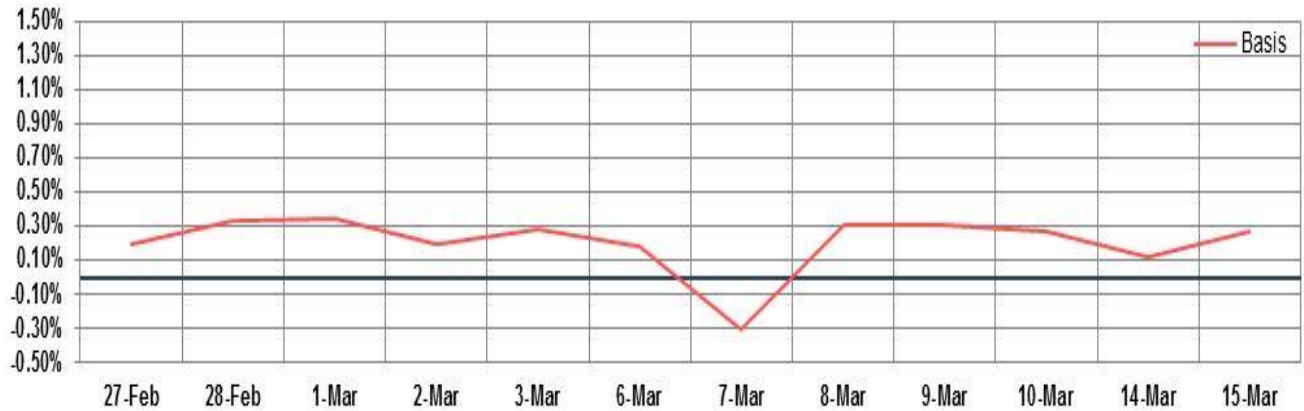
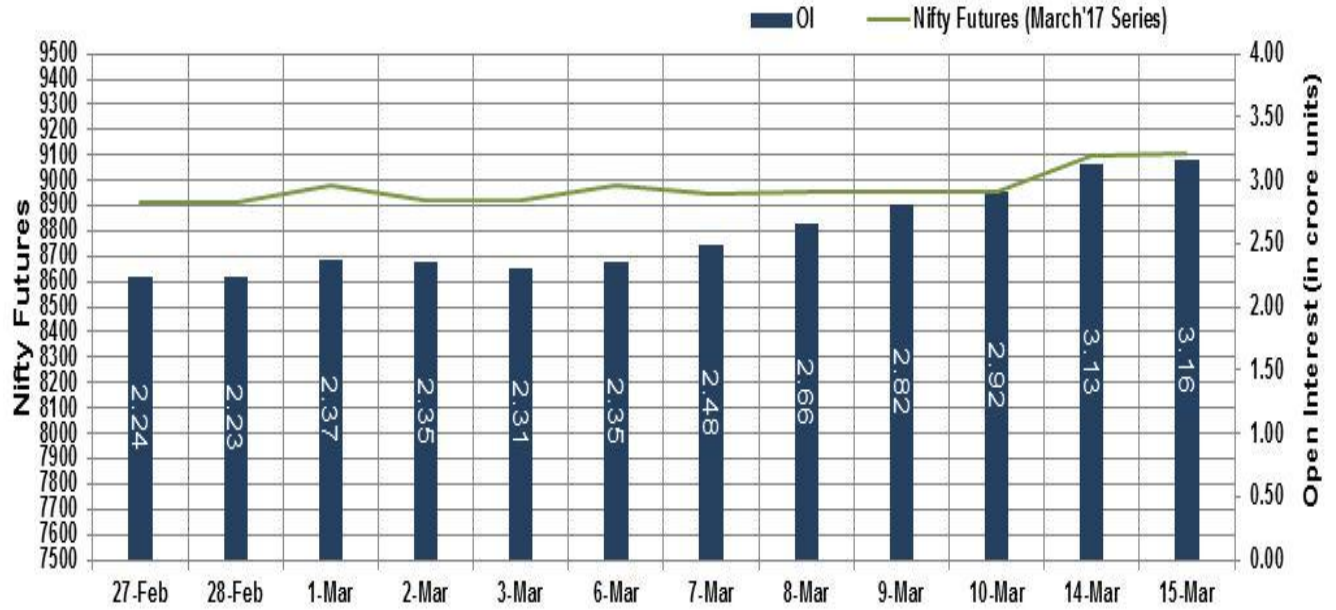
On the global front, European markets were trading in green ahead of a Federal Reserve rate-setting meeting in the U.S. However, Asian counters ended mostly in red as investors remained focused on what the Federal Reserve will say about tightening monetary policy during the rest of the year with markets already pricing in an immediate rise in US interest rates.

## Market Turnover & FII Derivative Data

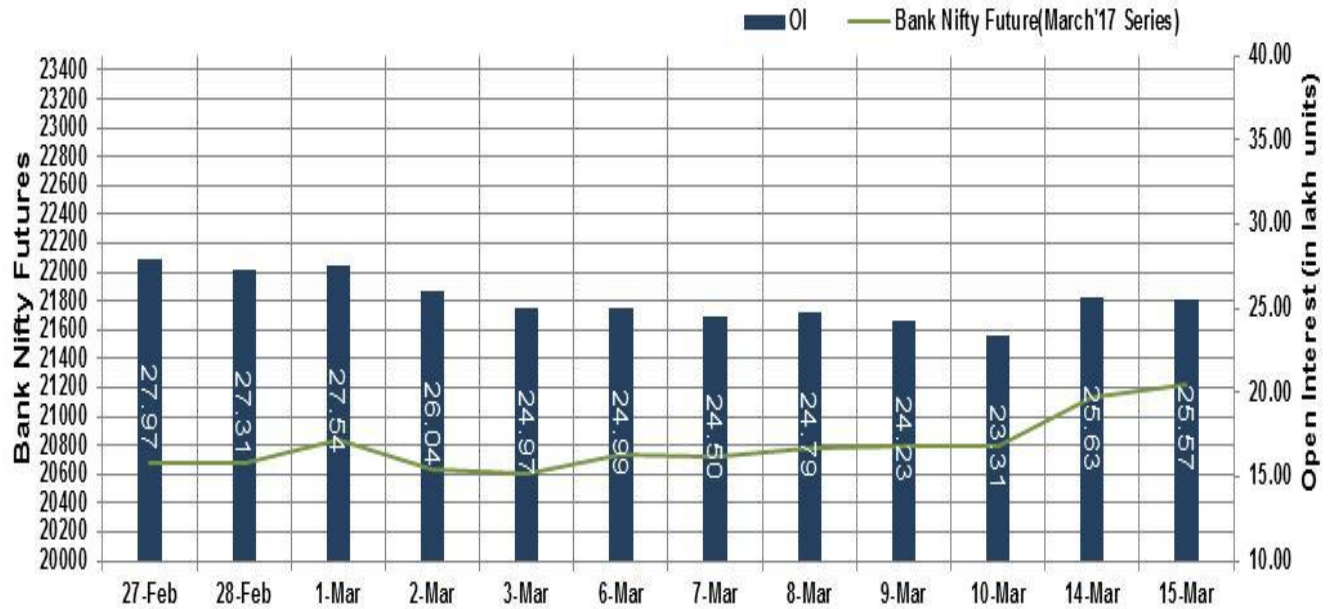
Market TO	Current	Previous	Net%
BSE CASH	54337	4678	1062
NSE CASH	24611	27837	(12)
NSE FO	349676	455781	(23)

FII Derivatives	Buy	Sell	Net
Ind. Futures	1295	1532	(237)
Ind. Options	23552	22527	1025
Stk. Futures	7409	7788	(379)
Stk. Options	4143	4237	(94)

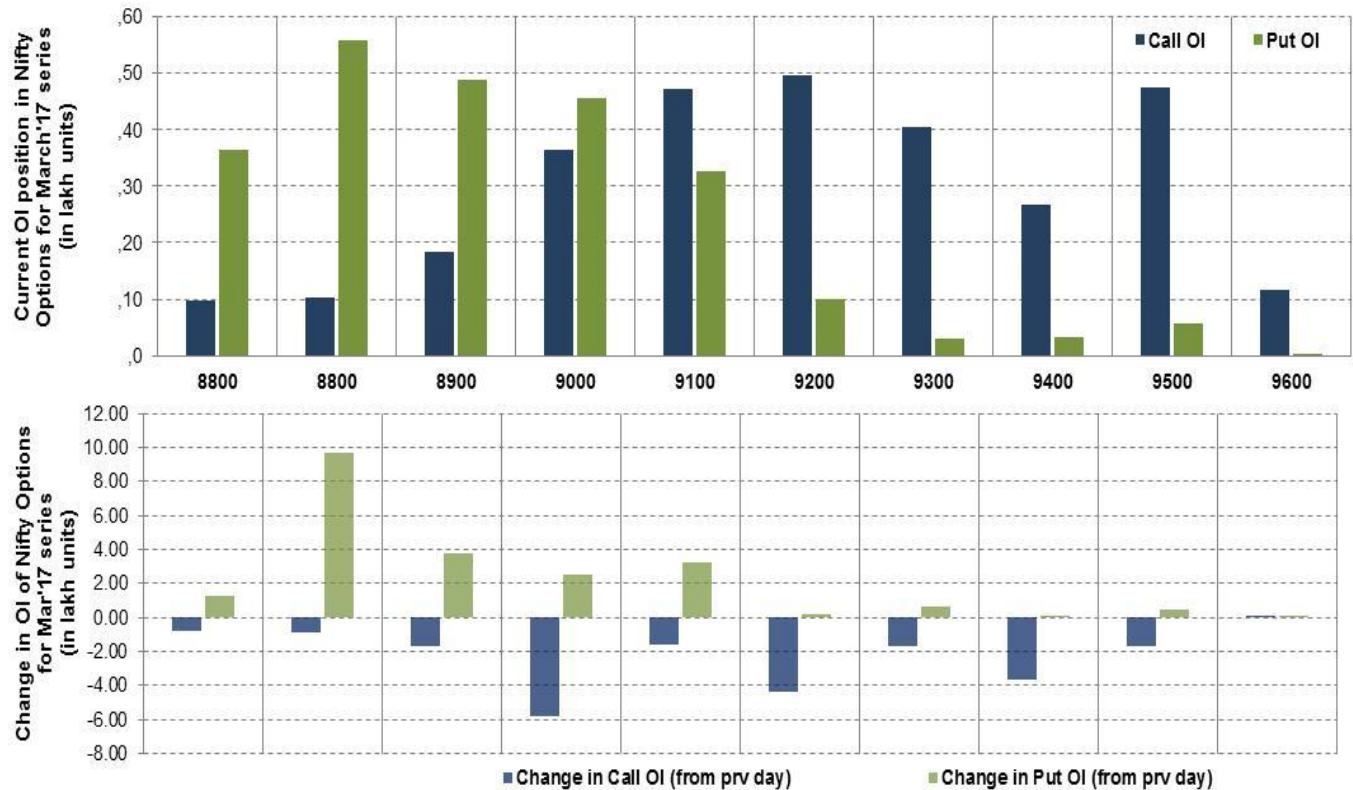
# Nifty Futures



## Bank Nifty Futures



## Nifty Options

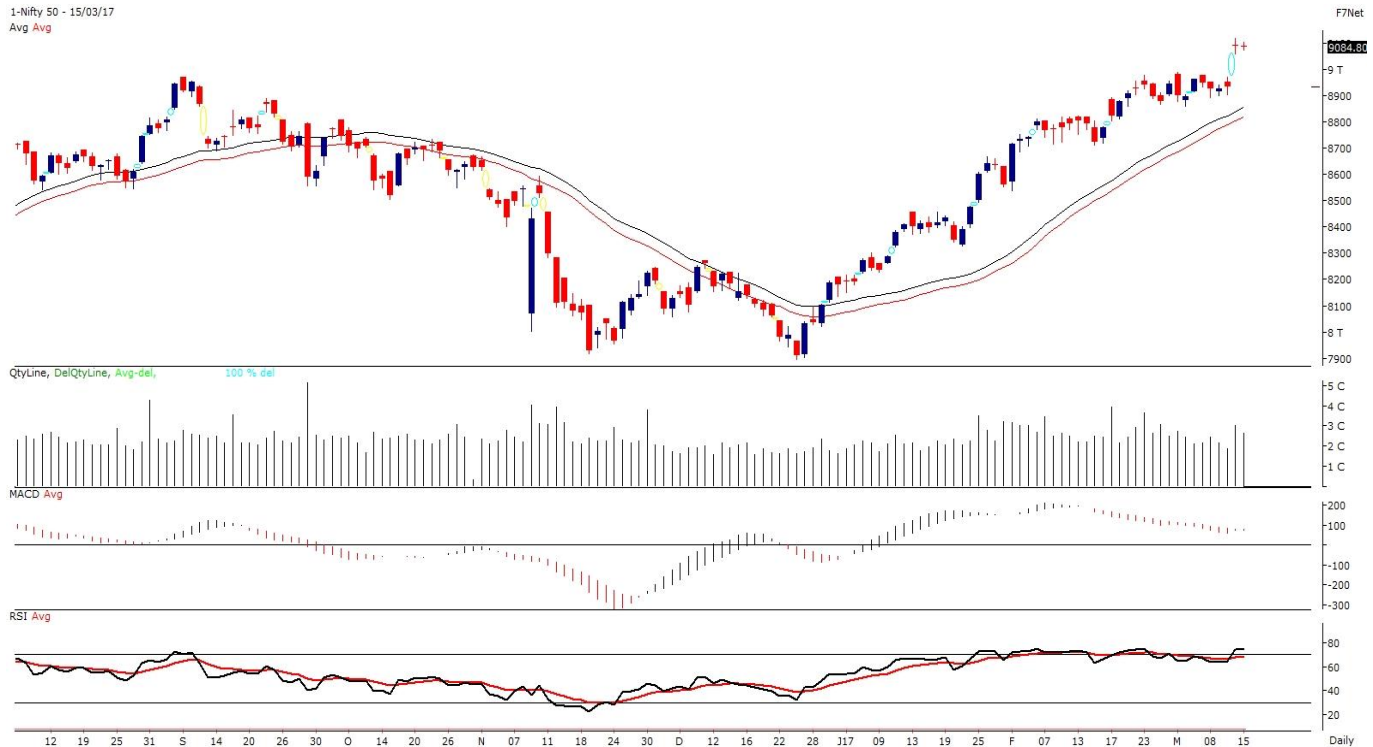


Note – Change in OI of Nifty Options refers to change from previous trading day  
 Source-NSE, SIHL Derivatives Research (Institutional Equities)

- Among Nifty calls 9,200 SP from the March month expiry was the most active call with a reduction of 0.44 million in open interest.
- Among Nifty puts, 8,800 SP from the March month expiry was the most active put with an addition of 0.96 million open interests.
- The maximum OI outstanding for Calls was at 9,200 SP (4.96mn) and that for Puts was at 8,800 SP (5.58mn).

## Nifty Technicals & Indices Levels

1-Nifty 50 - 15/03/17  
Avg Avg



Nifty Cash prices have settled at 9084.8 marginal down by 0.02% from its previous close. On the upper side it has resistance of 9150 and 9200 levels, While lower side it has support of 9000 and 8900 levels. Intraday traders should be cautious and take position accordingly.

Source-Spider, SIHL Research (Institutional Equities)

Pivot	CMP	R2	R1	Pivot	S1	S2
Nifty	<b>9085</b>	9120.0	9102.4	<b>9089</b>	9071.4	9057.9
Sensex	<b>29398</b>	29560.2	29479.2	<b>29419</b>	29338.0	29277.9
Nifty Futures	<b>9109</b>	9142.1	9125.7	<b>9114</b>	9097.2	9085.1
Bank Nifty	<b>21158</b>	21299.2	21228.6	<b>21146</b>	21075.6	20993.3
CNX IT	<b>10697</b>	10988.3	10842.4	<b>10760</b>	10614.2	10531.9



Fresh Longs ↑ Open Interest ↑ Price					
Script	Prev. OI	Cur. OI	% Chg. OI	LTP	Price % Chg
ICIL	3,356,500	4,546,500	35.45	190.25	7.61
PAGEIND	27,800	33,700	21.22	14645.90	2.10
JPASSOCIAT	134,164,000	154,360,000	15.05	15.05	6.36
HEROMOTOCO	1,233,800	1,357,200	10.00	3357.20	1.24
Short-Covering ↓ Open Interest ↑ Price					
Script	Prev. OI	Cur. OI	% Chg. OI	LTP	Price % Chg
SIEMENS	937,500	896,000	-4.43	1258.25	0.10
RECLTD	30,096,000	28,542,000	-5.16	159.85	1.14
JETAIRWAYS	5,040,000	4,778,000	-5.20	455.35	1.73
LICHSGFIN	7,624,100	7,135,700	-6.41	587.75	1.10
Fresh Shorts ↑ Open Interest ↓ Price					
Script	Prev. OI	Cur. OI	% Chg. OI	LTP	Price % Chg
TORNTPOWER	5,058,000	5,631,000	11.33	191.80	-2.57
IGL	1,713,800	1,875,500	9.44	1023.40	-0.27
IOC	15,573,000	16,806,000	7.92	371.25	-0.95
COALINDIA	14,715,200	15,716,500	6.80	294.15	-0.56
Long Unwinding ↓ Open Interest ↓ Price					
Script	Prev. OI	Cur. OI	% Chg. OI	LTP	Price % Chg
AJANTPHARM	504,800	492,800	-2.38	1749.75	-0.69
RELCAPITAL	10,467,000	10,212,000	-2.44	558.70	-0.25
BHARATFIN	17,828,000	17,316,000	-2.87	804.40	-1.40
CGPOWER	16,260,000	15,780,000	-2.95	70.30	-0.78



#### Disclaimer:

The Information provided by SMS or in newsletter or in any document has been prepared by Shah Investor's Home Ltd (SIHL). The Information provided by SMS or in newsletter does not constitute an offer or solicitation for the purchase or sale of any financial instrument or as an official confirmation of any transaction. The information contained herein is from publicly available data or other sources believed to be reliable, but we do not represent that it is accurate or complete and it should not be relied on as such. SIHL or any of its affiliates/ group companies shall not be in any way responsible for any loss or damage that may arise to any person from any inadvertent error in the information contained in this report or SMS. This Information provided by SMS, reports or in newsletter is provided for assistance only and is not intended to be and must not alone be taken as the basis for an investment decision. The user assumes the entire risk of any use made of this information. Each recipient of this Information provided by SMS, report or in newsletter should make such investigation as it deems necessary to arrive at an independent evaluation of an investment in the securities of companies referred to in this information provided by SMS, report or in newsletter (including the merits and risks involved), and should consult his own advisors to determine the merits and risks of such investment. The investment discussed or views expressed may not be suitable for all investors. This information is strictly confidential and is being furnished to you solely for your information.

The information should not be reproduced or redistributed or passed on directly or indirectly in any form to any other person or published, copied, in whole or in part, for any purpose. The information provided by report or SMS is not directed or intended for distribution to, or use by, any person or entity who is a citizen or resident of or located in any locality, state, country or other jurisdiction, where such distribution, publication, availability or use would be contrary to law, regulation or which would subject SIHL and affiliates/ group companies to any registration or licensing requirements within such jurisdiction. The distribution of this Information provided by SMS or in newsletter in certain jurisdictions may be restricted by law, and persons in whose possession this Information provided by SMS or in newsletter comes, should inform themselves about and observe, any such restrictions. The information given or Information provided by SMS, report or in newsletter is as of the date of the issue date of report or the date on which SMS provided and there can be no assurance that future results or events will be consistent with this information. This information is subject to change without any prior notice. SIHL reserves the right to make modifications and alterations to this statement as may be required from time to time. However, SIHL is under no obligation to update or keep the information current.

Nevertheless, SIHL is committed to providing independent and transparent recommendation to its client and would be happy to provide any information in response to specific client queries. Neither SIHL nor any of its affiliates, group companies, directors, employees, agents or representatives shall be liable for any damages whether direct, indirect, special or consequential including lost revenue or lost profits that may arise from or in connection with the use of the information. Past performance is not necessarily a guide to future performance. The disclosures of interest statements incorporated in the Information provided by SMS, report or in newsletter are provided solely to enhance the transparency and should not be treated as endorsement of the views expressed in the report. The analyst for this report certifies that all of the views expressed in this report accurately reflect his or her personal views about the subject company or companies and its or their securities, and no part of his or her compensation was, is or will be, directly or indirectly related to specific recommendations or views expressed in this report.

#### About Us:

Shah Investor's Home Ltd (SIHL) is an ISO 9001:2008 Certified financial Services Company established in 1994 at Ahmadabad, Gujarat. Customer satisfaction is guaranteed through our diversified product portfolio, professional management and customer first attitude. SIHL was the first broking house in Gujarat with membership in National Securities Depository Ltd (NSDL) and was the first broking name providing services in NSE F&O in Ahmedabad. Today, SIHL ranks among the top most players in Gujarat in retail stock broking area with 45 branches, 350 franchisee across India and providing service to more than 1,25,000 clients.